

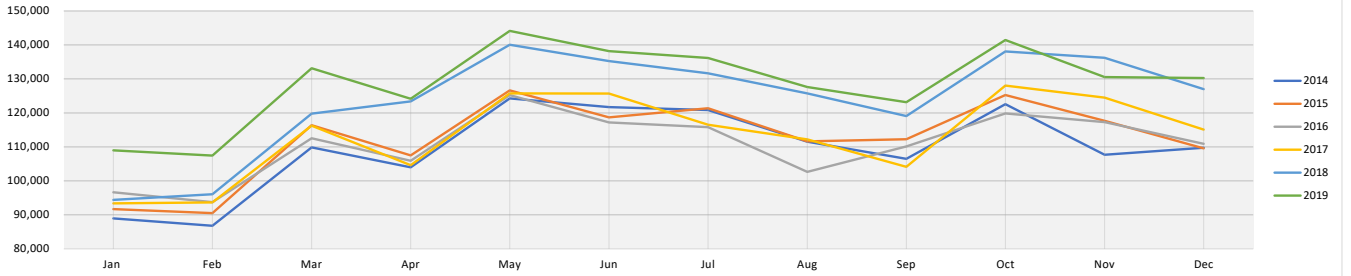
	December 2018	December 2019	Difference 18 vs 19	Percent (%) Change	Year to Date 2018	Year to Date 2019	Difference 18 vs 19	Percent (%) Change
<b>Total Enplaned</b>	126,975	130,265	3,290	2.59%	1,486,759	1,545,308	58,549	3.94%
<b>Total Deplaned</b>	121,667	126,427	4,760	3.91%	1,486,017	1,545,296	59,279	3.99%
<b>Total Passengers</b>	248,642	256,692	8,050	3.24%	2,972,776	3,090,604	117,828	3.96%

Enplaned Passengers by Airline								
	December 2018	December 2019	Difference 18 vs 19	Percent (%) Change	Year to Date 2018	Year to Date 2019	Difference 18 vs 19	Percent (%) Change
American Airlines	28,182	32,841	4,659	16.53%	291,199	379,814	88,615	30.43%
Delta Airlines	37,756	40,936	3,180	8.42%	478,568	522,872	44,304	9.26%
Southwest Airlines	43,958	40,046	(3,912)	-8.90%	451,640	419,456	(32,184)	-7.13%
United Airlines	14,640	16,442	1,802	12.31%	178,044	192,358	14,314	8.04%
Frontier Airlines	2,439	-	(2,439)	-100.00%	30,798	30,368	(430)	-1.40%
Xtra Airlines	-	-	-	100.00%	146	-	(146)	-100.00%
Via Airlines	-	-	-	100.00%	-	440	440	100.00%
Charters	-	-	-	100.00%	-	-	-	100.00%
<b>Total</b>	126,975	130,265	3,290	2.59%	1,430,395	1,545,308	114,913	8.03%

Deplaned Passengers by Airline								
	December 2018	December 2019	Difference 18 vs 19	Percent (%) Change	Year to Date 2018	Year to Date 2019	Difference 18 vs 19	Percent (%) Change
American Airlines	27,602	31,350	3,748	13.58%	348,560	383,810	35,250	10.11%
Delta Airlines	35,863	41,117	5,254	14.65%	476,479	516,864	40,385	8.48%
Southwest Airlines	41,932	38,354	(3,578)	-8.53%	452,178	419,283	(32,895)	-7.27%
United Airlines	14,048	15,606	1,558	11.09%	178,895	196,324	17,429	9.74%
Frontier Airlines	2,222	-	(2,222)	-100.00%	29,763	28,552	(1,211)	-4.07%
Xtra Airlines	-	-	-	100.00%	142	-	(142)	-100.00%
Via Airlines	-	-	-	100.00%	-	463	463	100.00%
Charters	-	-	-	100.00%	-	-	-	100.00%
<b>Total</b>	121,667	126,427	4,760	3.91%	1,486,017	1,545,296	59,279	3.99%

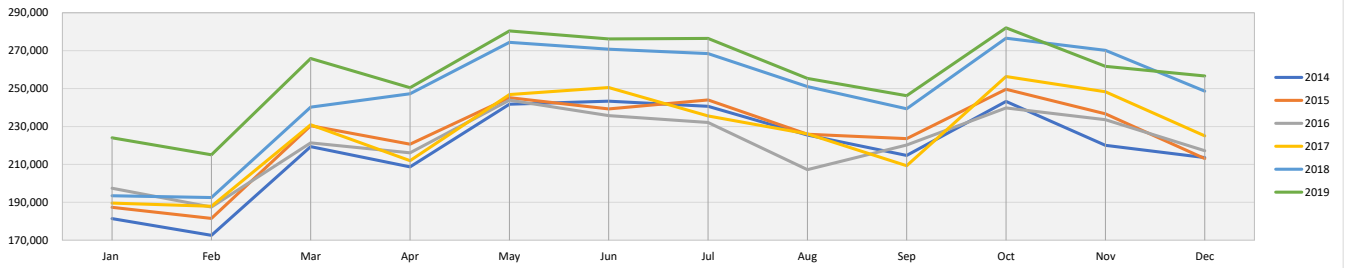
Total Passengers by Airline								
	December 2018	December 2019	Difference 18 vs 19	Percent (%) Change	Year to Date 2018	Year to Date 2019	Difference 18 vs 19	Percent (%) Change
American Airlines	55,784	64,191	8,407	15.07%	696,123	763,624	67,501	9.70%
Delta Airlines	73,619	82,053	8,434	11.46%	955,047	1,039,736	84,689	8.87%
Southwest Airlines	85,890	78,400	(7,490)	-8.72%	903,818	838,739	(65,079)	-7.20%
United Airlines	28,688	32,048	3,360	11.71%	356,939	388,682	31,743	8.89%
Frontier Airlines	4,661	-	(4,661)	-100.00%	60,561	58,920	(1,641)	-2.71%
Xtra Airlines	-	-	-	100.00%	288	-	(288)	-100.00%
Via Airlines	-	-	-	100.00%	-	903	903	100.00%
Charters	-	-	-	100.00%	-	-	-	100.00%
<b>Total</b>	248,642	256,692	8,050	3.24%	2,972,776	3,090,604	117,828	3.96%

### Enplaned Passengers



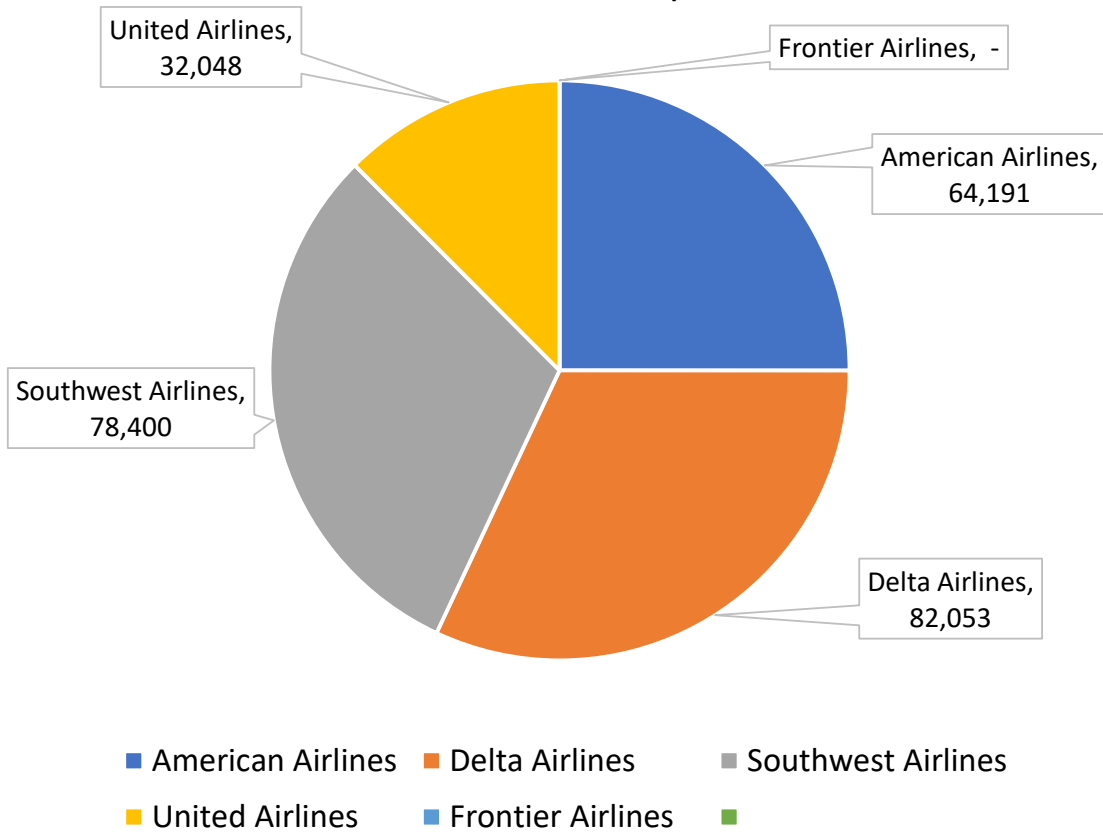
Year	Jan	Feb	Mar	Apr	May	Jun	Jul	Aug	Sep	Oct	Nov	Dec	Total	% Change
2014	88,958	86,790	109,840	103,973	124,271	121,718	120,828	111,524	106,507	122,566	107,679	109,739	1,314,393	
2015	91,687	90,513	116,364	107,497	126,636	118,695	121,361	111,633	112,266	125,257	117,671	109,559	1,349,139	2.64%
2016	96,631	93,748	112,558	105,892	125,241	117,215	115,811	102,666	110,121	119,851	117,321	110,908	1,327,963	-1.57%
2017	93,382	93,684	116,234	104,595	125,770	125,722	116,545	112,226	104,128	128,049	124,507	115,075	1,359,917	2.41%
2018	94,416	96,085	119,804	123,388	140,061	135,247	131,659	125,771	119,062	138,070	136,221	126,975	1,486,759	9.33%
2019	108,999	107,449	133,132	124,172	144,144	138,170	136,164	127,629	123,161	141,448	130,575	130,265	1,545,308	118.0%

### Total Passengers



Year	Jan	Feb	Mar	Apr	May	Jun	Jul	Aug	Sep	Oct	Nov	Dec	Total	% Change
2014	181,403	172,596	219,373	208,749	241,790	243,357	240,602	225,499	214,747	243,243	220,096	213,587	2,625,042	
2015	187,392	181,517	230,373	220,658	245,185	239,298	243,997	225,895	223,592	249,635	236,713	213,083	2,697,338	2.75%
2016	197,450	187,523	221,360	216,085	243,896	235,766	232,128	207,202	220,222	239,741	233,596	217,272	2,652,241	-1.67%
2017	189,611	187,936	230,924	211,976	246,836	250,566	235,589	226,114	209,300	256,347	248,344	225,096	2,718,639	2.50%
2018	193,508	192,524	240,200	247,269	274,341	270,733	268,434	251,086	239,309	276,567	270,163	248,642	2,972,776	9.35%
2019	224,012	215,073	265,875	250,463	280,430	276,174	276,486	255,363	246,252	282,038	261,746	256,692	3,090,604	117.9%

## December 2019 Market Share Report



<u>Airlines</u>	<u>Total Passengers</u>	<u>Market Share</u>
American Airlines	64,191	25.01%
Delta Airlines	82,053	31.97%
Southwest Airlines	78,400	30.54%
United Airlines	32,048	12.49%
Frontier Airlines	-	0.00%
<b>Total</b>	<b>256,692</b>	<b>100.00%</b>

<b>Total Passengers</b>				
	<b>2019 Total Passengers</b>	<b>2018 Total Passengers</b>	<b>Passenger Difference vs 18</b>	<b>Percent (%) Change 19 vs 18</b>
<b>January</b>	224,012	193,508	30,504	15.76%
<b>February</b>	215,073	192,524	22,549	11.71%
<b>March</b>	265,875	240,200	25,675	10.69%
<b>April</b>	250,463	247,269	3,194	1.29%
<b>May</b>	280,430	274,341	6,089	2.22%
<b>June</b>	276,174	270,733	5,441	2.01%
<b>July</b>	276,486	268,434	8,052	3.00%
<b>August</b>	255,363	251,086	4,277	1.70%
<b>September</b>	246,252	239,309	6,943	2.90%
<b>October</b>	282,038	276,567	5,471	1.98%
<b>November</b>	261,746	270,163	(8,417)	-3.12%
<b>December</b>	256,692	248,642	8,050	3.24%
<b>Total</b>	<b>3,090,604</b>	<b>2,972,776</b>	<b>117,828</b>	<b>3.96%</b>

	<b>Year-to-Date 2019</b>	<b>Year-to-Date 2018</b>	<b>Year-to-Date Passenger Difference 19 vs 18</b>	<b>Year-to-Date Percent (%) Change 19 vs 18</b>
<b>Total Passengers</b>	<b>3,090,604</b>	<b>2,972,776</b>	<b>117,828</b>	<b>3.96%</b>